

Update for LPCs and Pharmacy Owners

April/May 2026

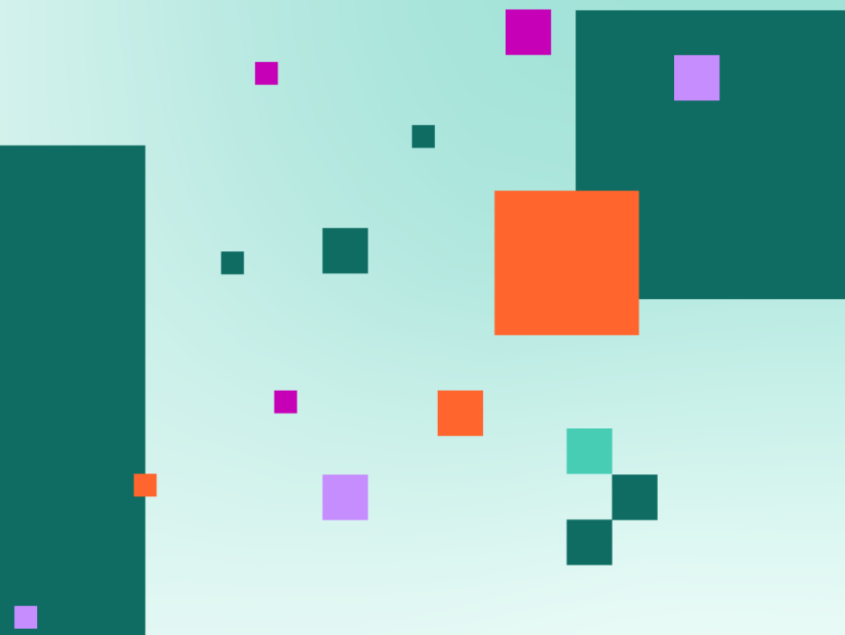
Fin Mc Caul
Regional Representative
North West Region



In this update

- The April meeting of the Community Pharmacy England Committee
- 2026/27 CPCF negotiations
- Sector inputs and polling
- Abuse and violence follow up
- Regional roadshows
- LPC Support and involvement including neighbourhoods, training and elections
- Questions and discussion

The April meeting of the Committee



Meeting summary and main issues

- The full Committee met in London on 22nd and 23rd April 2026
- Most of the discussions focussed on the ongoing CPCF negotiations including progress made and the latest position
- The top priority remains concluding negotiations and a more sustainable CPCF

The two days also covered:

- Subcommittee meetings covering a range of advisory and policy areas including price concessions and margin uplift to April Drug Tariff and other core functions
- Planning for the regional roadshows
- Ongoing support for LPCs including neighbourhoods

Subcommittee updates

Service Development

- The subcommittee met twice before the meeting to undertake detailed reviews of the service proposals within the CPCF negotiations.
- At the meeting business-as-usual topics were covered including changes to the Hypertension Case-Finding Service, which will be announced by NHS England shortly.
- Neighbourhood health development and the ongoing support for LPCs was reviewed.

Funding & Contract

- Reviewed analysis of Period of Treatment variation across the country, considering the impact this is having on pharmacy funding distribution and individual pharmacy sustainability, cost to the NHS, and patient safety.
- Discussed potential high-level principles that could be used to guide caps for pharmacy services, which would aim to curb outliers and better manage the distribution of funding across the sector.
- Several reports providing information to assist with monitoring delivery of core funding were examined.

Subcommittee updates

Legislation & Regulatory

- Reviewed NHS England's plans for this year's Community Pharmacy Assurance Framework (CPAF) compliance monitoring process, which includes completing 10 screening questions from July 2026 this year.
- Considered the regulatory aspects of the proposed amendments to the Information Regulations, discussing concerns and some welcome developments.
- Initial consideration to the introduction of pharmacist-authorized pharmacy technician dispensing and changes to the NHS regulations.

LPC & Contractor Support

- Reviewed early intelligence on the impact of ICB mergers and clustering, with LPCs reporting concerns around reduced capacity, loss of commissioning expertise and reduced access to senior NHS local leadership. Members agreed this should continue to be monitored.
- Considered plans to support the 2027 LPC elections, informed by lessons from the last cycle, with a focus on clearer guidance, training and succession planning.

Subcommittee updates

Audit & Risk

- Reviewed the latest management accounts and highlighted their intention to review the Committee Member expenses policy. They noted that updated KPIs are to be set shortly and recommended the auditors be re-appointed for 2026/27.

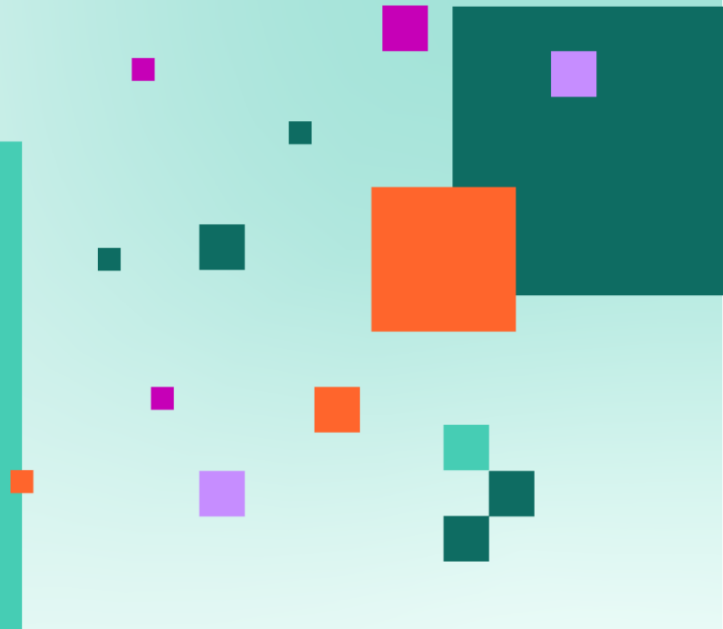
Governance & People

- Discussions continue with the Company Chemists' Association (CCA), the Independent Pharmacies Association (IPA) and the National Pharmacy Association (NPA) on the composition of the CPE Committee for the next committee term, which begins on 1st April 2027.

Communications & Public Affairs

- Public affairs planning including for the Pressures Survey results – details coming soon about how LPCs and pharmacy owners can support activities.
- Communications review ongoing – thanks for survey responses.

2026/27 CPCF negotiations



Latest Position

- Despite significant efforts by all parties, complex negotiations on the arrangements for the Community Pharmacy Contractual Framework (CPCF) in 2026/27 have not yet concluded
- Government requirements dictate that negotiations must remain confidential
- The Committee's top priority is negotiating a more sustainable CPCF – including improving margin delivery, fees, and reimbursement – and making the case for a multi-year roadmap to give pharmacies long-term certainty
- Significant time was spent to make sure all Committee Members understand in-depth details of the current offer and their implications, to reflect on where we are relative to our negotiating positions, and to reaffirm our priorities

Negotiating priorities a reminder

To make progress with Government on the following areas:

- A **plan to close the funding gap**, with proper indexation for activity and inflation
- A **roadmap for the future**, aligned with 10 Year Health Plan ambitions
- A **margin reset** and continued write-off of over-delivery
- Progress towards the **Community Pharmacist Prescribing Service** (in so far as this is achievable for the sector within the funding available)
- Reforms to aid efficiency and **reduce red tape**

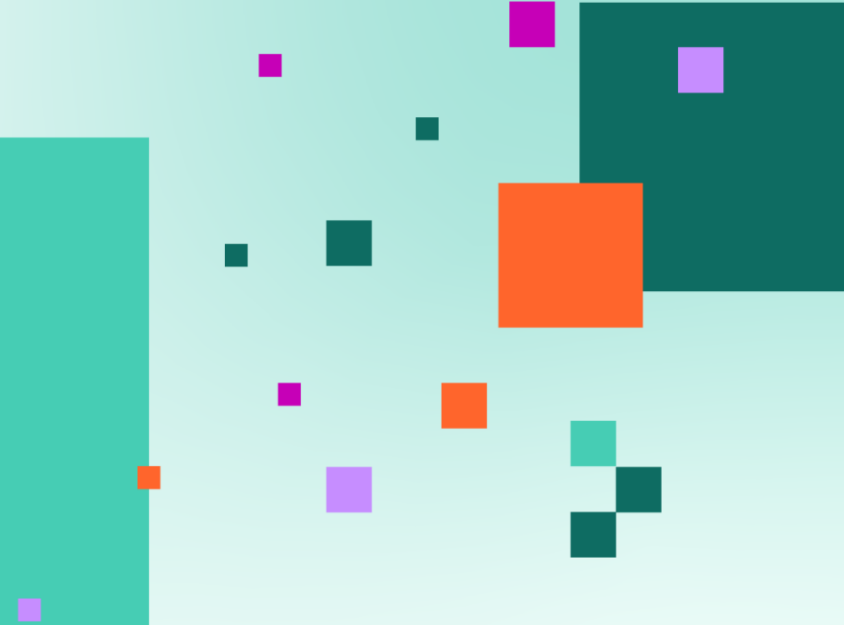
Reviewing progress and what next

- At the April meeting, the Committee received an update on key discussion points with the Department and Health and Social Care (DHSC) and NHS England, and considered how these align with CPE's negotiating principles and objectives
- This built on our negotiating positions on funding, services, regulatory reform and more that were confirmed at our February meeting, following input from across the sector
- We hope to be able to say more on these important outcomes in the coming weeks
- As pharmacy owners ourselves, all Committee Members know how incredibly frustrating the lack of certainty is. It makes managing finances all the more difficult, and planning for the future almost impossible

Dispensing at a loss

- All the sector bodies were consulted last summer on their proposals for negotiation objectives and we recently received an additional brief proposal from the IPA on seeking legal advice and IPA representatives raised this at the April meeting
- The committee agreed to continue to make representations to Government in this negotiation, as part of important discussions to ensure a complete reset of margin and delivery of reimbursement reform
- We agree that community pharmacies must be put on a sustainable footing, including how they are recompensed for dispensing medicines. These are central to our negotiating objectives and we have long argued for a complete reset and reform of the margin system

Sector inputs and polling

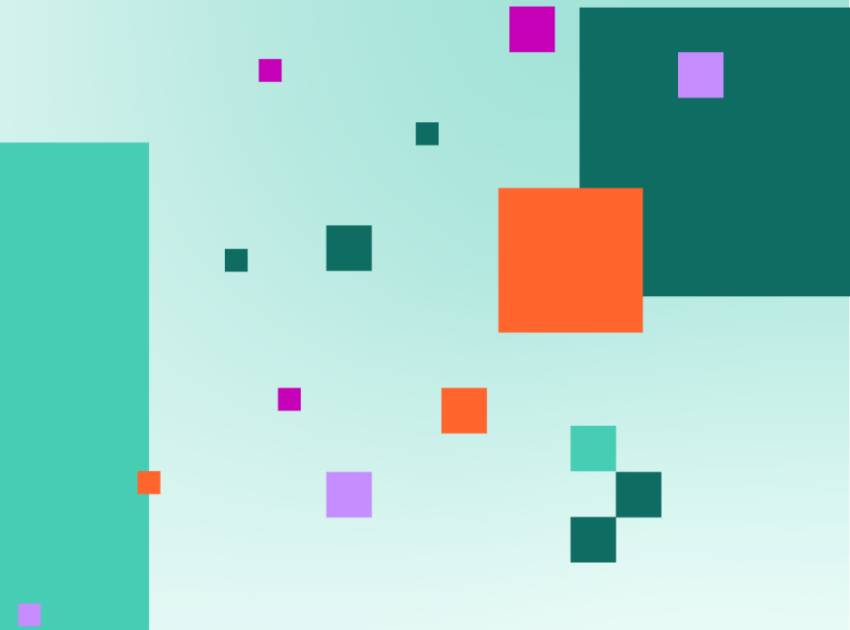


Latest polling

- Pharmacy owner views have been gathered throughout March and the first half of April via the 2026 Pharmacy Pressures Survey, which replaced the usual pre-Committee polling.
- This year's Survey had responses from owners representing around 3,000 pharmacy premises. Thank you for your help promoting this.
- Data is now being analysed and community pharmacy owners and LPCs will be asked to support promotion of the results in the coming weeks and months via media interviews, talking to MPs, and social media work.
- Community pharmacy owners and LPCs will be asked to support this including via media interviews, talking to MPs, and social media work.



Other ongoing work



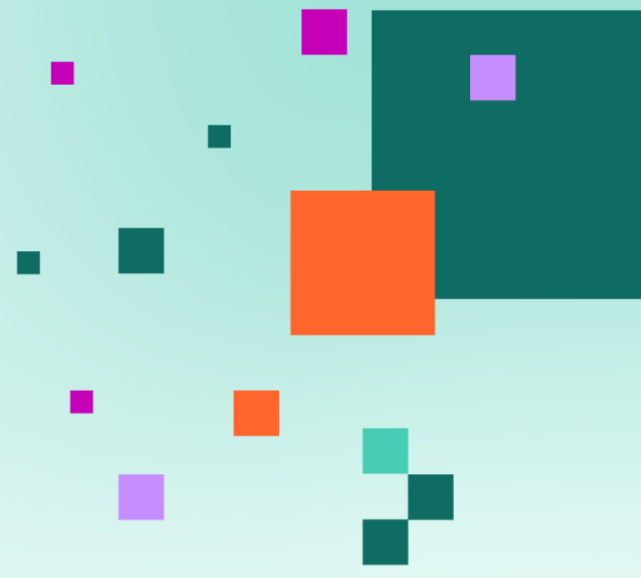
Abuse and violence follow-up actions

- Evidence shows racist, hostile, verbal and physical abuse is now a regular occurrence in community pharmacies, driven by wider system pressures and failures outside pharmacy control
- Community Pharmacy England is leading a coordinated response working with the LPCs on the following areas:
 - Public awareness and press activity
 - Seeking regulatory and policy changes
 - Working with NHS England and professional leadership
 - National engagement with policing
 - Supporting LPCs to drive local action with the police, ICBs and wellbeing support for pharmacy owners and teams

Regional events update

- As part of our ongoing commitment to speak directly with, and hear from pharmacy owners and LPCs, Community Pharmacy England will be holding a series of regional roadshow events across the country in 2026.
- These are important meetings to combine transparency about the work of Community Pharmacy England with meaningful input from pharmacy owners and teams on what matters most next.
- Interactive sessions and table discussions will feature in the agenda.
- Registration is open – promotional material will follow shortly to LPCs.
- **Afternoon sessions with LPC Chairs and Chief Officers** and some of the CPE Executive Leadership Team. We will be requesting regional topics and items for the agenda shortly.
- **The evening sessions are open to pharmacy owners, team members and LPCs** and will run from 7.30–9.15pm (doors open 6.45pm) with hot buffet and refreshments include to allow informal engagement with Executive Leadership, Professor Dame Jenny Harries (Chair), Regional Representatives, and Committee Members.

Seeking your input and
LPC support



RSG/TAPR Review

- A survey of CPE Committee members, incorporated into the broader Committee effectiveness review
- A survey of LPCs, focused on core areas of RSG/TAPR implementation
- A discussion with Professor David Wright to provide an independent perspective and gather his reflections

The LPC survey window is open until the 8th May and we would encourage you to complete as a committee exercise. Thanks if you have already done so

CLOT and LPC Chairs were involved in shaping the survey



Neighbourhood support

- Ongoing support is being provided to help with neighbourhood developments at a local level
- This support includes regular meetings for LPCs on the topic, with a community of practice having been formed to provide peer support for this local work
- A range of resources for LPCs to use locally to highlight the role of community pharmacies within neighbourhood working



LPC election support

- **Updated Elections Guidance (by July 2026):** updated milestones; clarified roles/snapshot dates; aligned to model constitution (subject to any agreed changes from ongoing composition work).
- **Returning Officer training & tools:** online sessions; end-to-end walkthroughs; common pitfalls/lessons from 2023; checklists and template timelines.
- **Digitalisation support (optional):** e-distribution of nomination papers/candidate statements; guidance on publishing election information online; explore secure digital voting platforms (subject to LPC choice and budget); consider better use of NHSBSA contractor data where feasible.
- **Boost participation & engagement:** encourage candidates to stand; improve voter awareness/turnout; clearer messaging on the role/expectations of LPC members (and regional reps).
- **Succession planning link:** prompt LPCs to reflect on leadership needs and proactively encourage future candidates alongside election activity.
- **Indicative 2027 cycle milestones (subject to dependencies):** notify entitlements **16 Nov 2026** → nominations issued **11 Jan 2027** → nominations close **22 Feb 2027** → ballots (if required) **1–15 Mar 2027** → results by **19 Mar 2027** → members take office **1 Apr 2027**.



Upcoming support events April – June

- Two LPC member learning sessions – a new session for new LPC representatives or those wanting to refresh their knowledge
- LPC Learning Session: Making the Case: Bids, Papers and Business Cases for Community Pharmacy – Session 1, an introduction session prior to Session 2
- LPC Learning Session: Making the Case: Bids, Papers and Business Cases for Community Pharmacy – Session 2, a half day follow up to Session 1 practical session
- LPC Forum of Chairs meeting at the Houses of Parliament
- LPC Chief Officer induction days, for two newly appointed Chief Officers

See further information on dates and register: <https://cpe.org.uk/lpcs-and-local/lpc-area/learning-and-events/>

Questions and discussion

